

CHESAPEAKE BAY

POPLAR ISLAND

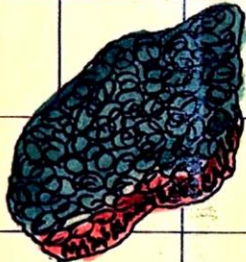
1969

"JEFFERSON"  
ISLAND

56 YEARS OF WASHING AWAY



NORTH  
POINT



POPLAR ISLAND  
POT AND HARBOR

LITTLE NARROWS

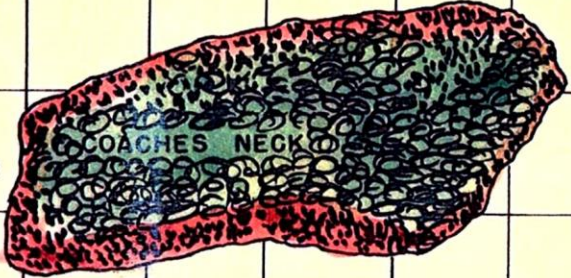


BOBBLE'S  
NECK

BIG NARROWS



GUM POINT



MINNEY  
BALL

CEDAR  
COVE

COACHES  
NECK

POPLAR ISLAND NARROWS

BIG OYSTER  
BAR

AS SEEN TODAY: BY:  
CHARLES R. HARRISON  
TILGHMANS ISLAND, MD.  
NOV. 1970