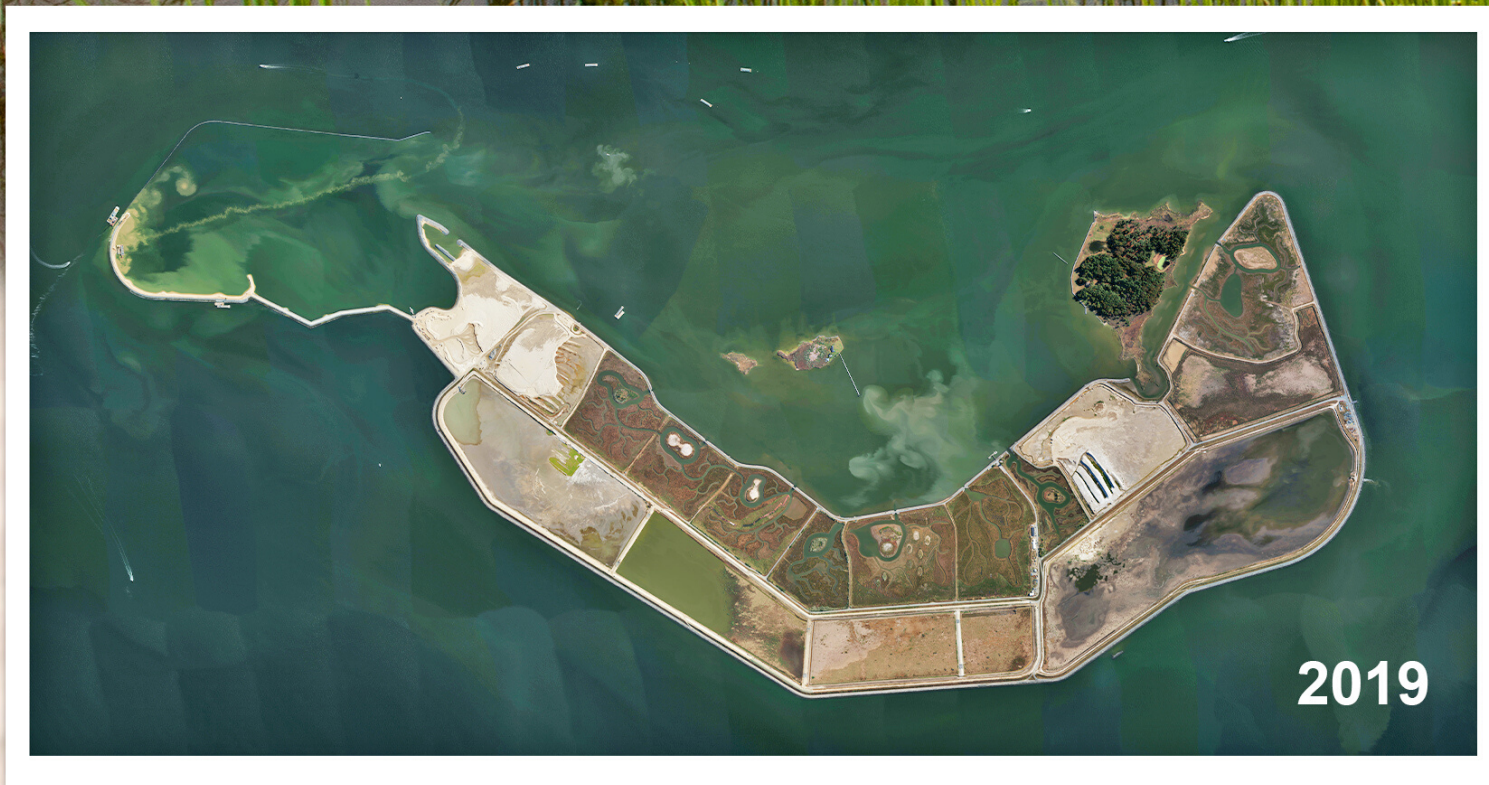


# RESTORATION OF POPLAR ISLAND



Poplar Island is located in Talbot County, MD, and was estimated to have comprised 1,140 acres in 1847. The island supported over 100 human residents and diverse wildlife. Extensive erosion reduced the island to five acres by the early 1990s. Federal and state environmental agencies, including the U.S. Army Corps of Engineers and the Maryland Department of Transportation Maryland Port Administration, began the restoration project of Poplar Island in 1994. Today, Poplar Island measures over 1,140 acres, and is undergoing an additional expansion. When completed, the island will contain 1,750 acres of protected island habitat.

The Poplar Island Environmental Restoration Project is an international model for beneficial use of dredged material. Modern technology has been implemented to create wetland and upland habitats.

Poplar Island serves as a wintering site, transient stop, and nesting location for local and migratory wildfowl. It also provides shelter and quiet water habitats for diamondback terrapins, crabs, rockfish, and killifish.

Tours and educational programs at Poplar Island focus on beneficial uses of dredged material to form a remote island habitat. Students study water quality monitoring, habitat restoration, erosion/deposition, and species diversity. Students also learn about cultural history from the 1600s to today.

